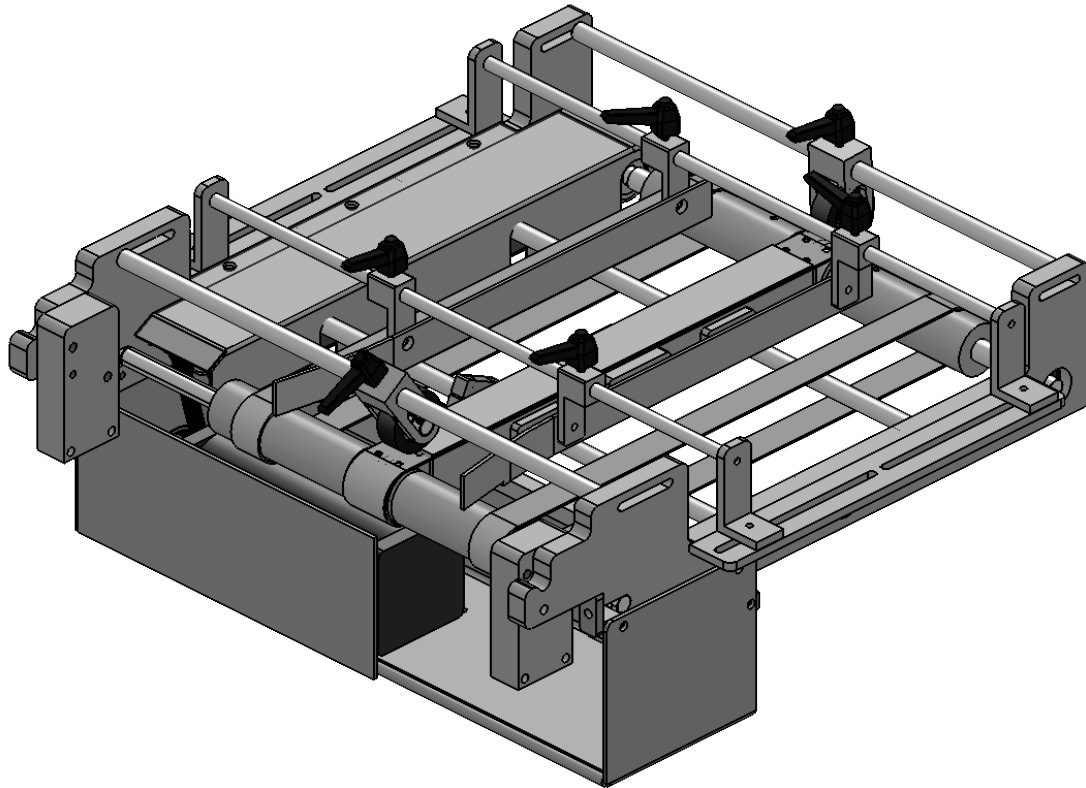


D5FHBC "	A : ; D5FH	J YbXcf	E HM	REV	C DH	DESCRIPTION
%\$\$%(%	F, &FG	71 H#FG	,	XX		R8 BEARING
%\$\$' +'	-(%&(%	9@G5	'	XX		THREADED ADJUSTABLE HANDLE .500
%\$\$(' (	B5	A 57 < B 98	&	B		NIP ROLLER YOLK MOUNT
%\$\$(' )	B #5	A 57 < B 98	&	B		NIP ROLLER DELRIN ROLLER
%\$\$(' *	B #5	A 57 < B 98	&	B		NIP ROLLER AXLE SHAFT
' %&^ -	G) DD; &	71 H#FG	'	XX		.500 ID 1.125 OD SPLIT COLLAR LOCKING BEARING
' %&+*%	B #5	A 57 < B 98	%	D		RIGHT VAC ARM
' %&+*&	B #5	A 57 < B 98	%	D		LEFT VAC ARM
' %&+*'	B #5	A 57 < B 98	(	B		EXTENDED VACUUM SUPPORT ROD
' %&+*(	B #5	A 57 < B 98	&	A		IDLER END ADJUSTMENT CAP
' %&+*)	B #5	A 57 < B 98	%	C		REAR IDLER SHAFT
' %&+**	B #5	A 57 < B 98	%	D		EXTENDED DRIVE SHAFT
' %&+*+	B #5	G< 99H 9H5 @	%	C		MOTOR PAN
' %&+*,	B #5	A 57 < B 98	%	A		EXTENDED GUIDE BLOCK SLIDE RAIL
' %&+*-	%(' (?*	695 F B;	%	XX		1/2" NEEDLE BEARING
' %&+*\$	, &\$!) A !%)	69@H	%	XX		18" HTD TRANSFER BELT
' %&++'	B #5	A 57 < B 98	%	C		DRIVE SHAFT
' %&+)	B #5	G< 99H 9H5 @	%	B		TOP BELT GUARD 18"
' %&+*	B #5	A 57 < B 98	&	A		UNIVERSAL WING
' %&+**	B #5	A 57 < B 98	%	A		VACUUM BLOCK CAP
' %&+*+	B #5	A 57 < B 98	&	B		FVT DRIVE ROLLER
' %&+*-	B #5	A 57 < B 98	&	B		FVT IDLER ROLLER
' %&+,\$	B #5	A 57 < B 98	&	C		BELT GUIDE ADJUSTMENT BLOCK
' %&+,%	B #5	A 57 < B 98	%	B		1.5" OD X 1.5" W CROWNED IDLER PULLEY
' %&+,&	B #5	A 57 < B 98	%	B		1.5" OD X 1.5" W CROWNED DRIVE PULLEY
' %&+,'	B #5	A 57 < B 98	%	B		1.5" x 1.5" VACUUM MANIFOLD
' %&+,(	B5	A 57 < B 98	(	C		VACUUM SHAFT MOUNT O RING PLATE
' %&+),	B #5	A 57 < B 98	%	A		THREADED MANIFOLD FITTING PLATE
' %&+,*	B #5	A 57 < B 98	&	C		VACUUM MANIFOLD END CAP
' %&+(-	B #5	69@H	&	B		18" FVT TABLE BELT
' %&+*-	B #5	69@H	%	B		18" FVT VACUUM BELT
' %&+*+	B #5	A 57 < B 98	&	B		FVT PIVOT MOUNT BLOCK
' %&+)'	B #5	A 57 < B 98	(	A	M	SIDE GUIDE MOUNT
' %&+)(	B #5	A 57 < B 98	&	B	M	SIDE GUIDE ROD
' %&+)-	B #5	A 57 < B 98	(	A	M	SIDE GUIDE ADJUSTMENT BLOCK
' %&+*\$	B #5	G< 99H 9H5 @	%	A		MOTOR GUARD
' %&+*%	B #5	G< 99H 9H5 @	%	A	M	SIDE GUIDE LT - FULL
' %&+*&	B #5	G< 99H 9H5 @	%	B	M	SIDE GUIDE RT - FULL
' %&+**	B5	A 57 < B 98	%	A	M	IG ENCODER LOWER BRACKET
' %&+*+	B5	A 57 < B 98	%	A	M	IG ENCODER UPPER BRACKET
' ) \$\$\$\$	@99GC B A %&&\$\$( &%* < D'87	9@7 HF 7 5 @	%	XX		DC MOTOR
' ) \$\$\$%	-( +&- 5 &) \$	< 5F8K 5F9	(	XX		1/2" STANDOFF
' ) \$\$\$&%	' \$!) A %!) *: 5'	6/ '6A : ;	%	XMB		30 TOOTH HTD TIMING PULLEY
' ) \$\$\$&'	-\$%() 5 (+-	< 5F8K 5F9	(	XX		NIP ROLLER DOWEL PIN
' ) \$\$\$&(	- *) +? ('	< 5F8K 5F9	(	XX		NIP ROLLER SPRING
' ) \$\$\$' '	&\$!) A %!) *: 5*	6/ '6A : ;	'	XM		20 TOOTH HTD TIMING PULLEY
' ) \$\$\$ ,	' %\$!) A !%)	69@H	%	XX		310-5M-15

) \$\$\$, %  
: J H% "



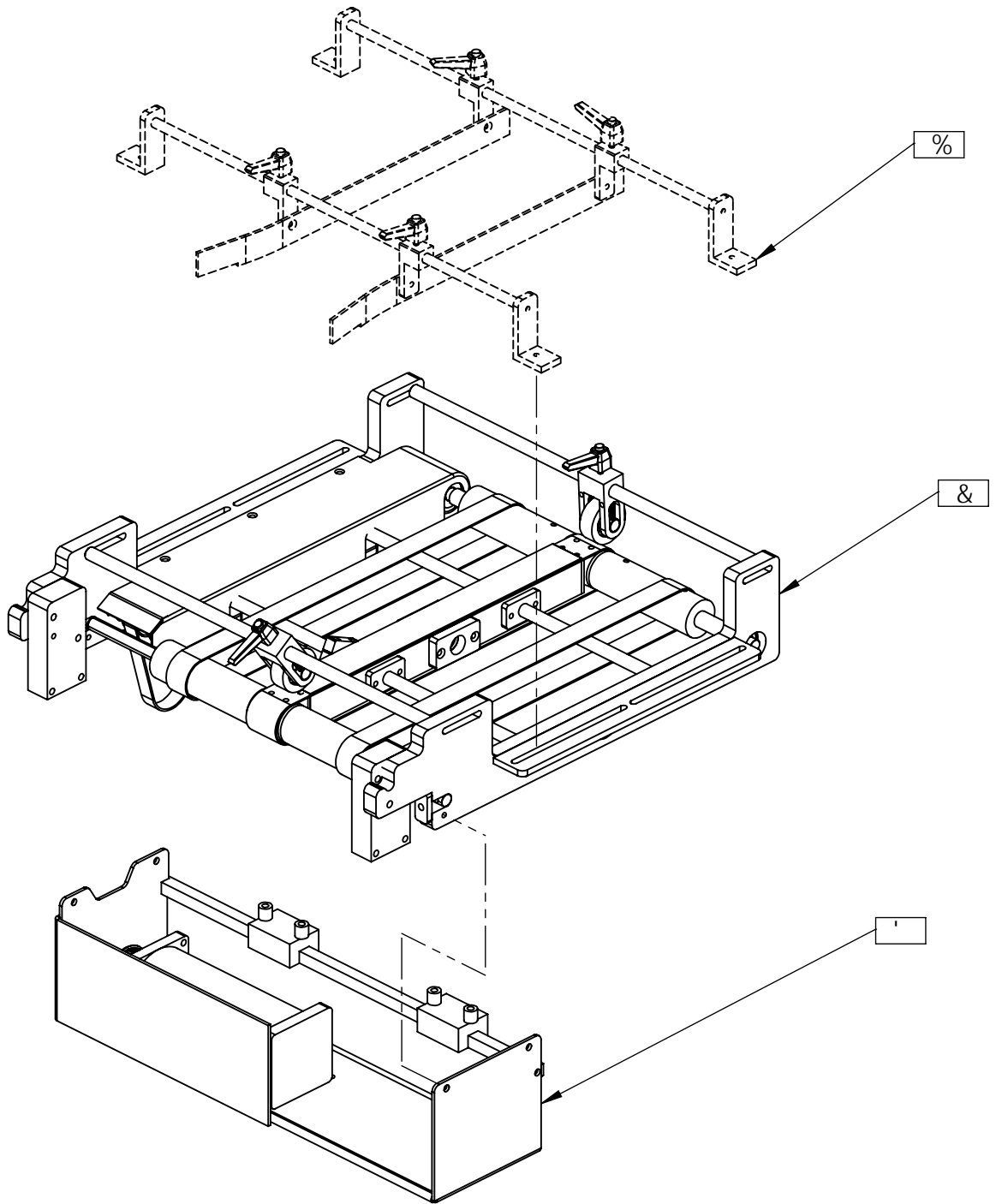
5

*Superior*

PAPER HANDLING SOLUTIONS

DFC DF-915 FM5B8 7CB: -89BH5@

H:9-B: CFA5HC B 7CBH5-B98-B1K-G  
8F5K-B: -6H:9GC@DFC D9FHMC:  
Q D9F C F D5D9F <5B8@B: GC@ HC BG"5BM  
F9DFC B17HC B-B D5FHCF 5G5 K <C@  
K #K:CI HH:9K F#H8 D9FA GGC B C:  
Q D9F C F D5D9F <5B8@B: GC@ HC BG-G  
DFC <6#H8"



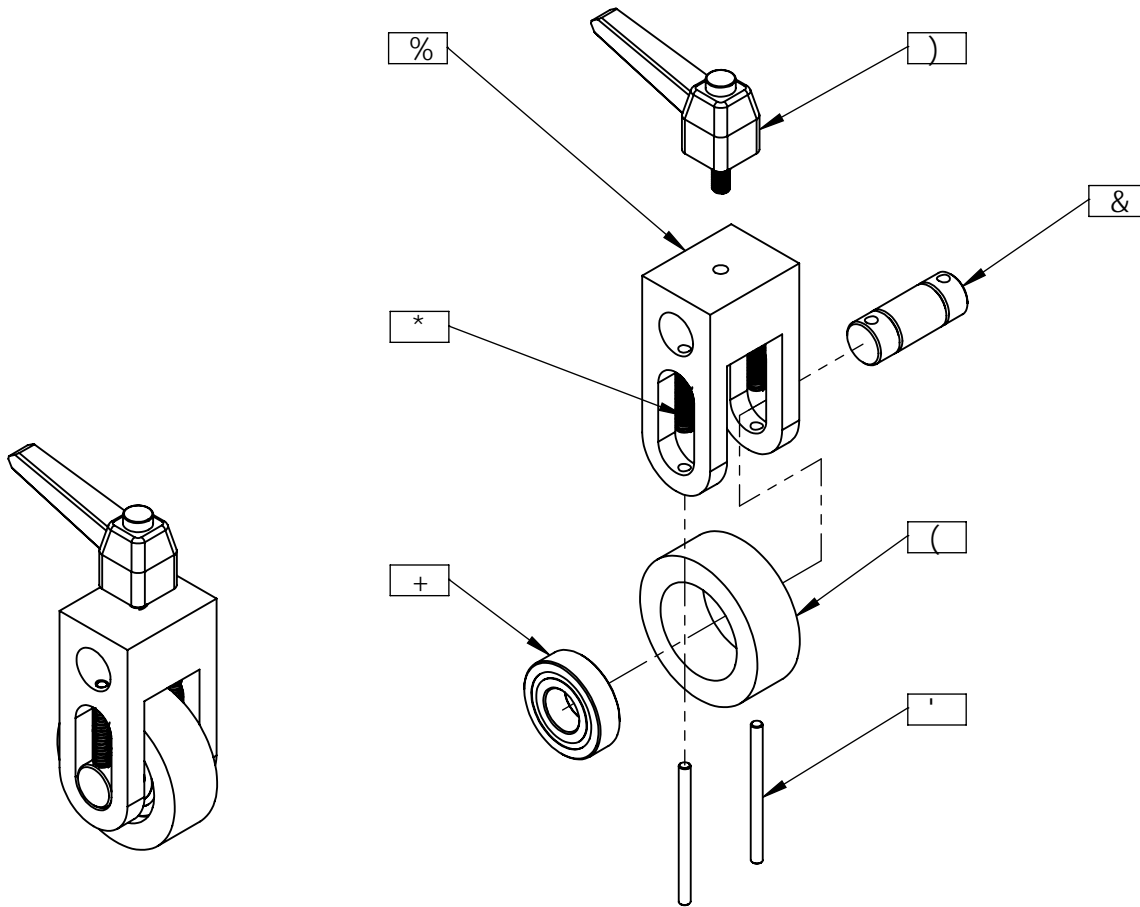
#DA BC "	DUftBc	DESCRIPTION	E HM
%	(\$\$) -	SIDE GUIDE KIT (OPTION)	%
&	(\$\$ *%)	CARRIAGE ASSEMBLY (18")	%
'	(\$\$ *\$)	MOTOR ASSEMBLY	%

DFC DF-95FM5B8 7CB: 89BH5@  
 H:9 B: CFA 5HC B 7 C B H 5 B 98 B H: G8F5K B: GH:9GC @DFC D9FHMC: G D9F C F D5D9F  
 <5B8@B: GC @ HC BG 5BMF9DFC B1 7 HC B B D5FHC F 5G5 K <C @9K H:C1 H H:9K F H9B  
 D9FA 4GC B C: G D9F C F D5D9F <5B8@B: GC @ HC BG GDFC <6498\*

*Superior*  
 PAPER HANDLING SOLUTIONS

5ggYa V`mBi a VYf.  
 ) \$\$\$, %

# B-D'FC @F 5GG9A 6M



#A BC "	DUffB c	DESCRIPTION	E HM
%	%%\$( ' (	YOLK MOUNT	%
&	%%\$( ' *	AXLE SHAFT	%
'	' ) \$\$&'	DOWEL PIN	&
(	%%\$( ' )	DELRIN ROLLER	%
)	%%\$( ' +'	HANDLE	%
*	' ) \$\$&(	SPRING	&
+	%%\$( ' %	BEARING	%

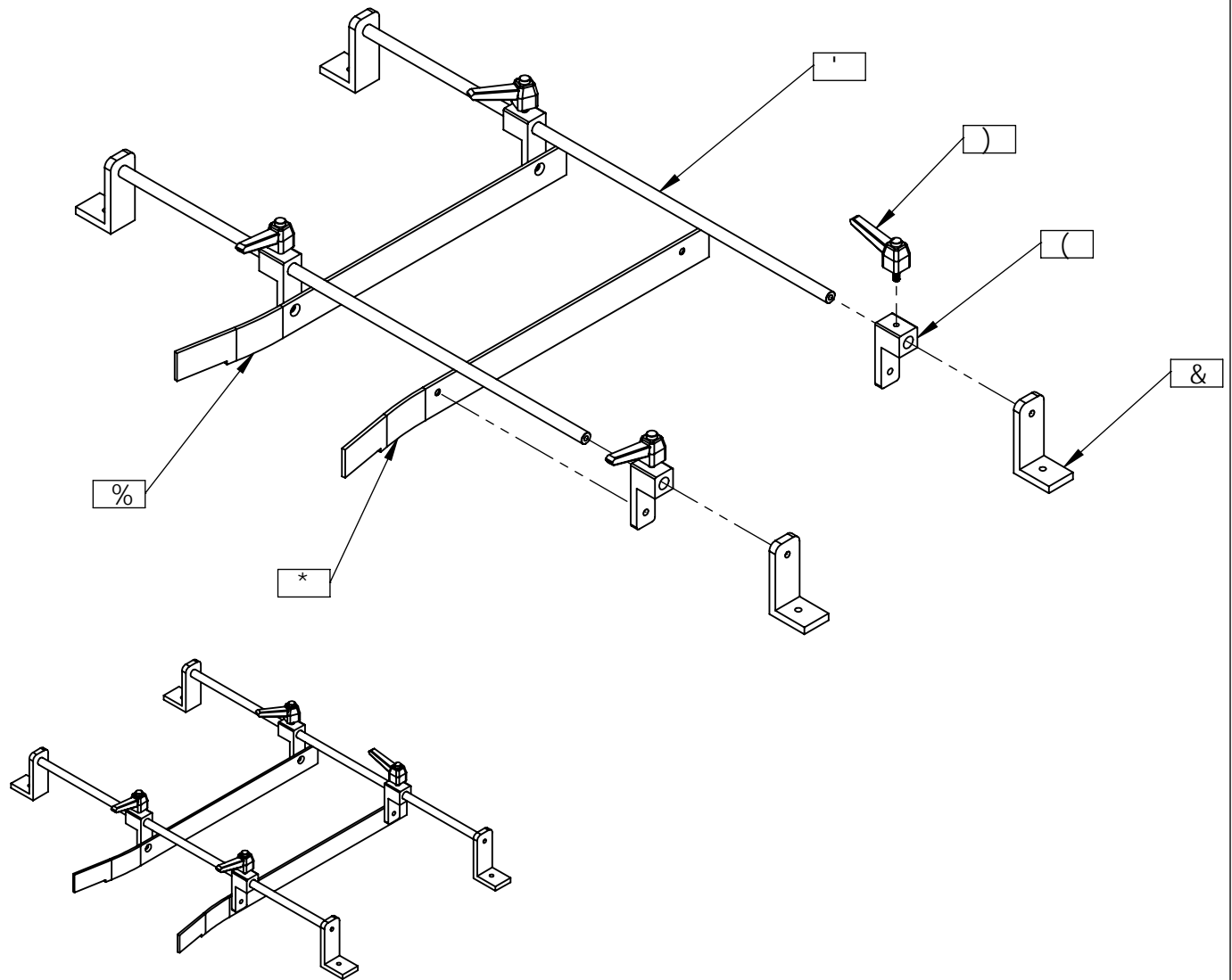
DFC DF-5FM5B8 7CB: 89B H5@

H:9 B: CFA 5HC B 7 C B H 5 B 98 B H: G8F5K B: 'GH:9CC @DFC D9FHMC: G D9F C F D5D9F <5B8 @B: GC @ HC BG' 5BMF9DFC B1 7 HC B B D5FHC F 5G5 K <C @9K H: C I H H: 9 K F H 98 D9FA 4GC B C: G D9F C F D5D9F <5B8 @B: GC @ HC BG GDFC <6498 \*

**Superior**  
PAPER HANDLING SOLUTIONS

5ggYa V`mBi a VYf.  
(\$\$& &

# G89; I 89? HfV% 'L fC DHC BŁ



#DA BC "	DUftB c	DESCRIPTION	QTY.
%	' \$%- *%	SIDE GUIDE LT (OPTION)	1
&	' \$%- )'	SIDE GUIDE MOUNT (OPTION)	4
'	' \$%- ) (	SIDE GUIDE BAR (OPTION)	2
(	' \$%- ) -	ADJUSTMENT BLOCK (OPTION)	4
)	%'\$' +'	HANDLE (OPTION)	4
*	' \$%- * &	SIDE GUIDE RT (OPTION)	1

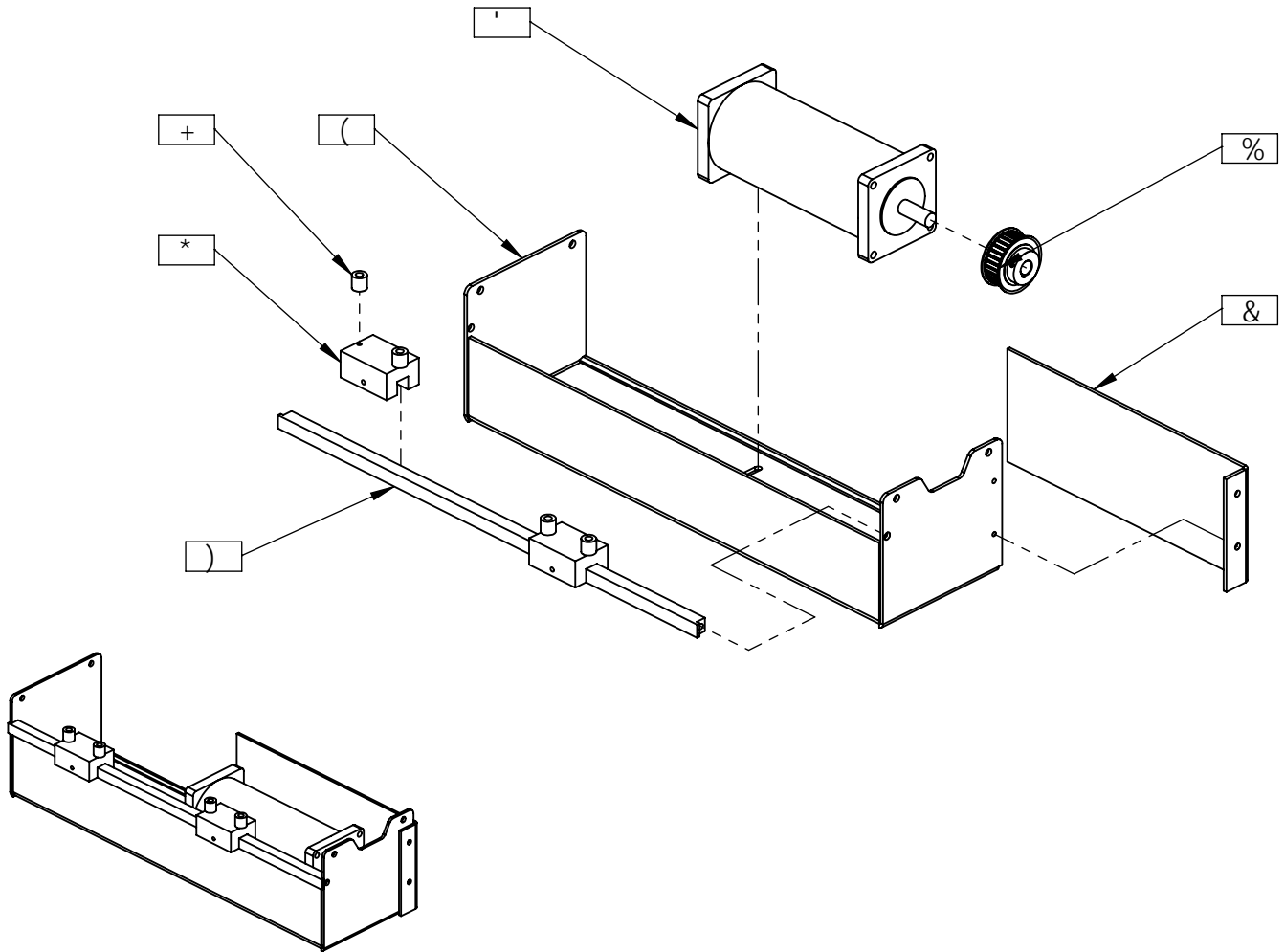
DFC DF 9 5 FM 5 B 8 7 CB: 8 9 B H 5 @

H: 9 B: CFA 5 HC B 7 C B H 5 B 9 8 B H: G 8 F 5 K B: 'GH: 9 GC @ DFC D 9 F HMC: 'G D 9 F C F D 5 D 9 F'  
< 5 B 8 @ B: 'GC @ HC BG' 5 B M F 9 D F C B I 7 HC B B D 5 F H C F 5 G 5 K < C @ 9 K H: C I H H 9 K F H 9 B'  
D 9 F A G G C B C: 'G D 9 F C F D 5 D 9 F < 5 B 8 @ B: 'GC @ HC BG G D F C < 6 H 9 8'

*Superior*  
PAPER HANDLING SOLUTIONS

5 ggYa V`mBi a VYf.  
(\$\$) -

# A C H C F ' 5 G G 9 A 6 @ M



#DA BC "	DuffBc	DESCRIPTION	E HM
%	' ) \$\$&%	TIMING PULLEY	%
&	' \$% * \$	MOTOR GUARD	%
'	' ) \$\$%	MOTOR	%
(	' \$%+ * +	MOTOR PAN	%
)	' \$%+ *	BLOCK SLIDE RAIL	%
*	' \$%+ , \$	BELT GUIDE ADJUSTMENT BLOCK	&
+	' ) \$\$%	STANDOFF	(

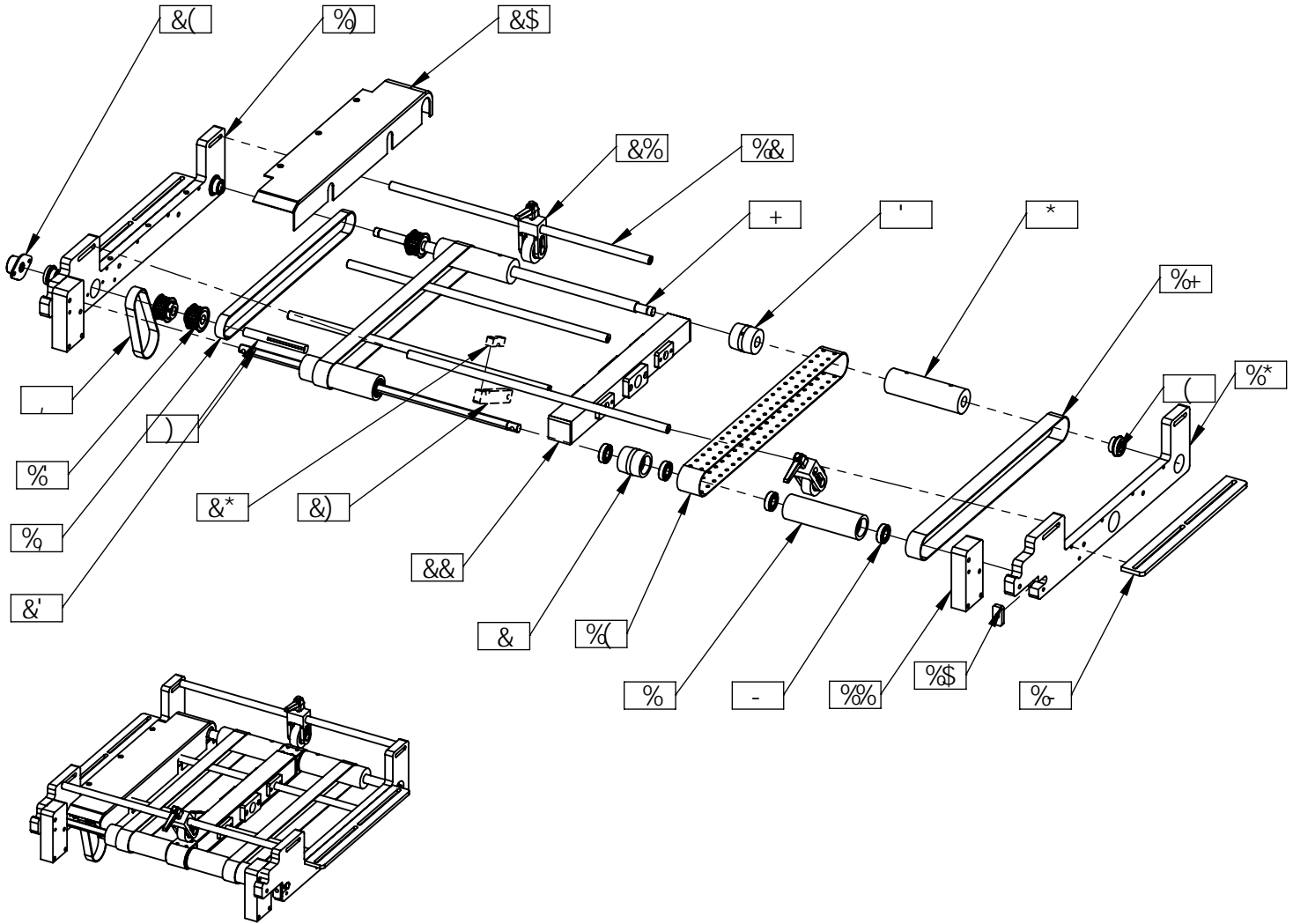
DFC DF 9 5 FM 5 B 8 7 C B : 8 9 B H 5 @

H: 9 B: CFA 5HC B 7 C B H 5 B 9 8 B H: G 8 F 5 K B: GH: 9 GC @ DFC D 9 F HMC: G D 9 F C F D 5 D 9 F < 5 B 8 @ B: GC @ HC BG 5 B M F 9 DFC B 1 7 HC B B D 5 F H C F 5 G 5 K < C @ 9 K H: C 1 H H: 9 K F H 9 B D 9 F A GGC B C: G D 9 F C F D 5 D 9 F < 5 B 8 @ B: GC @ HC BG G DFC < 6 H 9 8 \*

*Superior*  
PAPER HANDLING SOLUTIONS

5 ggYa V mBi a VYf.  
(\$\$ \* \$

# 75FF-5; 95GG9A 6@Mf% 'L



#PA BC "	DUffB c	DESCRIPTION	E HM
%	' \$%+-	IDLER ROLLER	&
&	' \$%+, %	CROWNED IDLER PULLEY	%
'	' \$%+, &	CROWNED DRIVE PULLEY	%
(	' \$%&* -	BEARING	'
)	' \$%+*	REAR IDLER SHAFT	%
*	' \$%+, +	DRIVE ROLLER	&
+	' \$%+**	EXTENDED DRIVE SHAFT	%
,	' ) \$% ,	MOTOR TIMING BELT	%
-	%\$\$\$( %	BEARING	*
%\$	' \$%+*	ADJUSTMENT CAP	&
%%	' \$%+- +	FEEDER MOUNT	&
%&	' \$%+*	SUPPORT SHAFT	(
%	' ) \$\$' '	TIMING PULLEY	'

#PA BC "	DUffB c	DESCRIPTION	E HM
%{	' \$%+- *	VACUUM BELT	%
%)	' \$%+*&	LEFT VAC ARM	%
%*	' \$%+*%	RIGHT VAC ARM	%
%+	' \$%+-)	TABLE BELT	&
%	' \$%++\$	TRANSFER BELT	%
%-	' \$%+**	UNIVERSAL WING	&
&\$	' \$%+)	BELT GUARD	%
&%	( \$\$&, &	NIP ROLLER ASSEMBLY	&
&&	( \$\$' *&	VACUUM MANIFOLD ASSEMBLY (18")	%
&'	' \$%+**	DRIVE SHAFT	%
&(	' \$%+*-	BEARING	%
&)	' \$%+ +	IG ENCODER LOWER BRACKET (OPTION)	%
&*	' \$%+ ,	IG ENCODER UPPER BRACKET (OPTION)	%

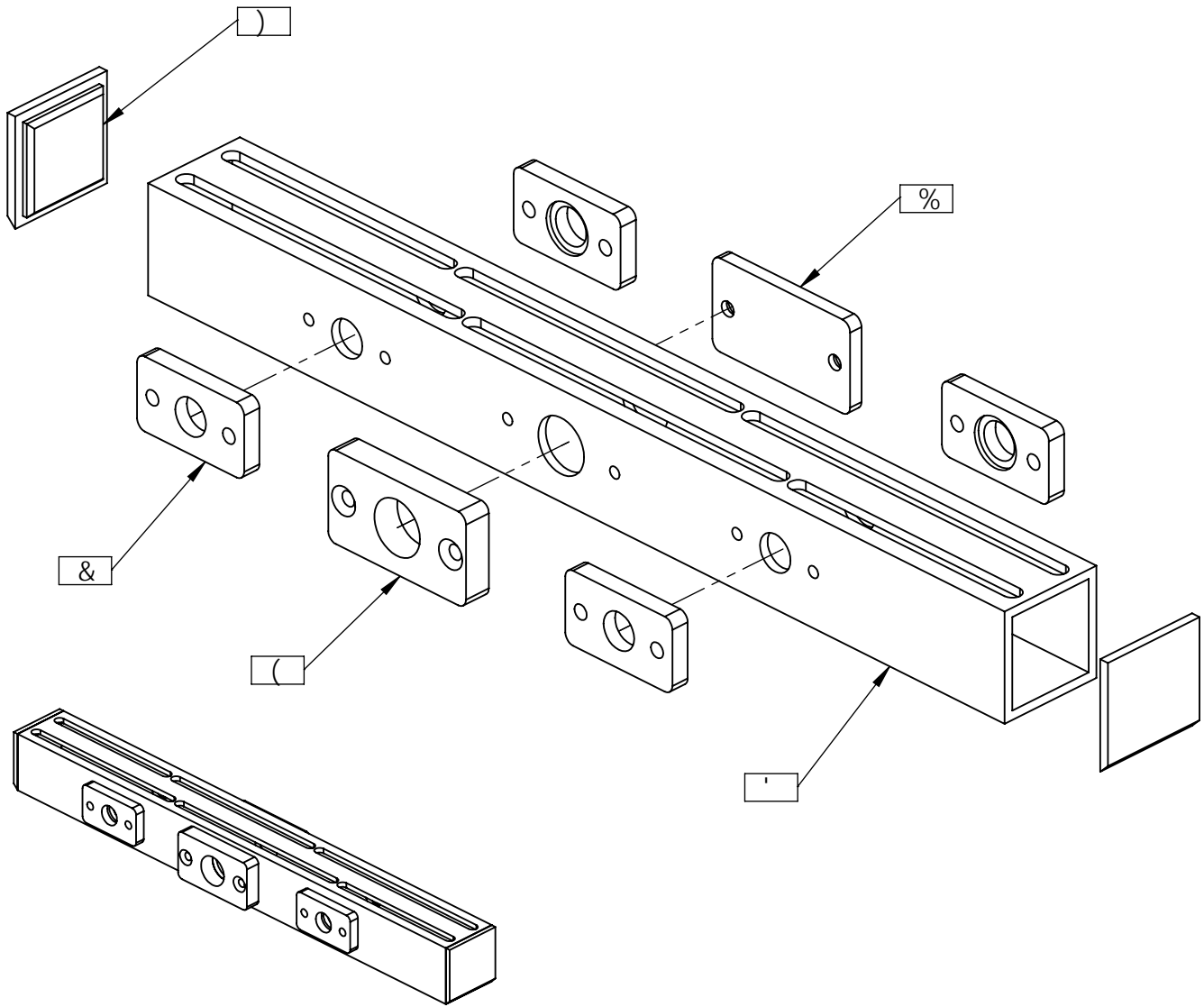
DFC DF-95FM5B8 7CB: 89BH5@

H:9 B: CFA 5HC B 7 C BH5 B98 B H: G8F5K B: 4GH9CC @DFC D9FHMC: G D9F C F D5D9F  
 <5B8@B: GC @ HC BG 5BMF9DFC B1 7 HC B B D5FHC F 5G5 K <C @9K H:C1 H H:9 K F H9B  
 D9FA 4GC B C: G D9F C F D5D9F <5B8@B: GC @ HC BG GDFC <6+98\*

**Superior**  
 PAPER HANDLING SOLUTIONS

5ggYa V mBi a VYf.  
 (\$\$' \*%)

# J 5711 A 'A 5B ÷ C @ 8 '5GG9A 6@MfV% 'L



#PA BC "	DUftB C	DESCRIPTION	E HM
%	' \$%t ++	VACUUM CAP	%
&	' \$%t, (	VACUUM SHAFT MOUNT	(
'	' \$%t, '	VACUUM MANIFOLD	%
(	' \$%t, )	MANIFOLD PLATE	%
)	' \$%t, *	MANIFOLD END CAP	&

DFC DF 9 5 FM 5 B 8 7 CB: 8 9 B H 5 @

H: 9 B: C FA 5 HC B 7 C B H 5 B 9 8 B H: 6 8 F 5 K B: ' 6 H: 9 CC @ DFC D 9 F H MC: ' G D 9 F C F D 5 D 9 F  
< 5 B 8 @ B: ' GC @ HC BG ' 5 B MF 9 D FC B 1 7 HC B ' B D 5 F H C F 5 G 5 K < C @ 9 K H: C 1 H H: 9 K F H 9 B  
D 9 FA 4 GC B C: ' G D 9 F C F D 5 D 9 F < 5 B 8 @ B: ' GC @ HC BG 6 D FC < 6 + 9 8 "

**Superior**  
PAPER HANDLING SOLUTIONS

5 ggYa V`mBi a VYf.  
(\$\$' \* &