

# Champion Divert Module

*Superior PAPER HANDLING SOLUTIONS*

---



*Superior Performance, Superior Value*

Have this information ready when calling in about your equipment:

Model: \_\_\_\_\_ Serial #: \_\_\_\_\_

Warranty Start Date: \_\_\_\_\_

© Superior Paper Handling Solutions, Inc. All rights reserved.

**Illustrations in this guide are for reference only and may depict optional features that are available at additional costs.**

Superior Paper Handling Solutions, Inc.  
7150 Boone Avenue N, Suite 130  
Brooklyn Park, Minnesota 55428 – USA

Tel. 763-546-9140  
Fax. 763-546-8883  
Email. [info@Superior-PHS.com](mailto:info@Superior-PHS.com)  
Web. [www.Superior-PHS.com](http://www.Superior-PHS.com)

*Superior Performance, Superior Value*

## INTRODUCTION

The new *Patent Pending* **Champion Divert Module** is designed to divert product from the production line flow into a divert bin. The Divert Module can be used with virtually any inline host system and can have inline or 90 degree stacking conveyors after the Divert. The Divert Module is extremely beneficial for verification, inspection, printing, inserting, tabbing, and many other applications

**Great for diverting paper and related products for:**

- » **Barcode Printing,**
- » **Lot/Date Code Printing,**
- » **Vision, Scanning, and Inspection Applications**

The Champion Divert Module can be used inline with new or existing system processes like vacuum bases, belted conveyors, lugged conveyors, folders, printers, wrappers, and much more. Can be used with virtually any camera, scanner or vision system to divert pieces based on pre-set inspection requirements. Can be used with existing controllers on add-on counting devices, like the **SmartCount™**, to divert a piece on a specified count for manual inspection.



## SPECIFICATIONS



**Utilities Requirement:** 115vac - 60Hz, (Optional 240vac. - 50Hz) 60 psi compressed air

**Footprint:** 30"W x 24.5"L(base) x +/-35"H, Divert: 30"W x 11"L x 5"H

**Product Sizes:** 2"W x 3"L to 18" x 12" (Optional lengths available)

**Maximum Speed:** 450 ft./min (Higher max speed available)

**Product Thickness:** up to 1/4"

**Divert Gate Interface:** We provide a 24vdc, 500mA signal. Host system will open and close this signal.

## Stop Run

Depressed and the Diverter will stop.

Pulled up and the Diverter will run.

## Divert Cycle

Press Divert Cycle to manually open and close the Diverter Paddle



## Speed Pot

Turn the Speed Pot dial from 0 to 10 to adjust from 0 to 450 ft./min.

---

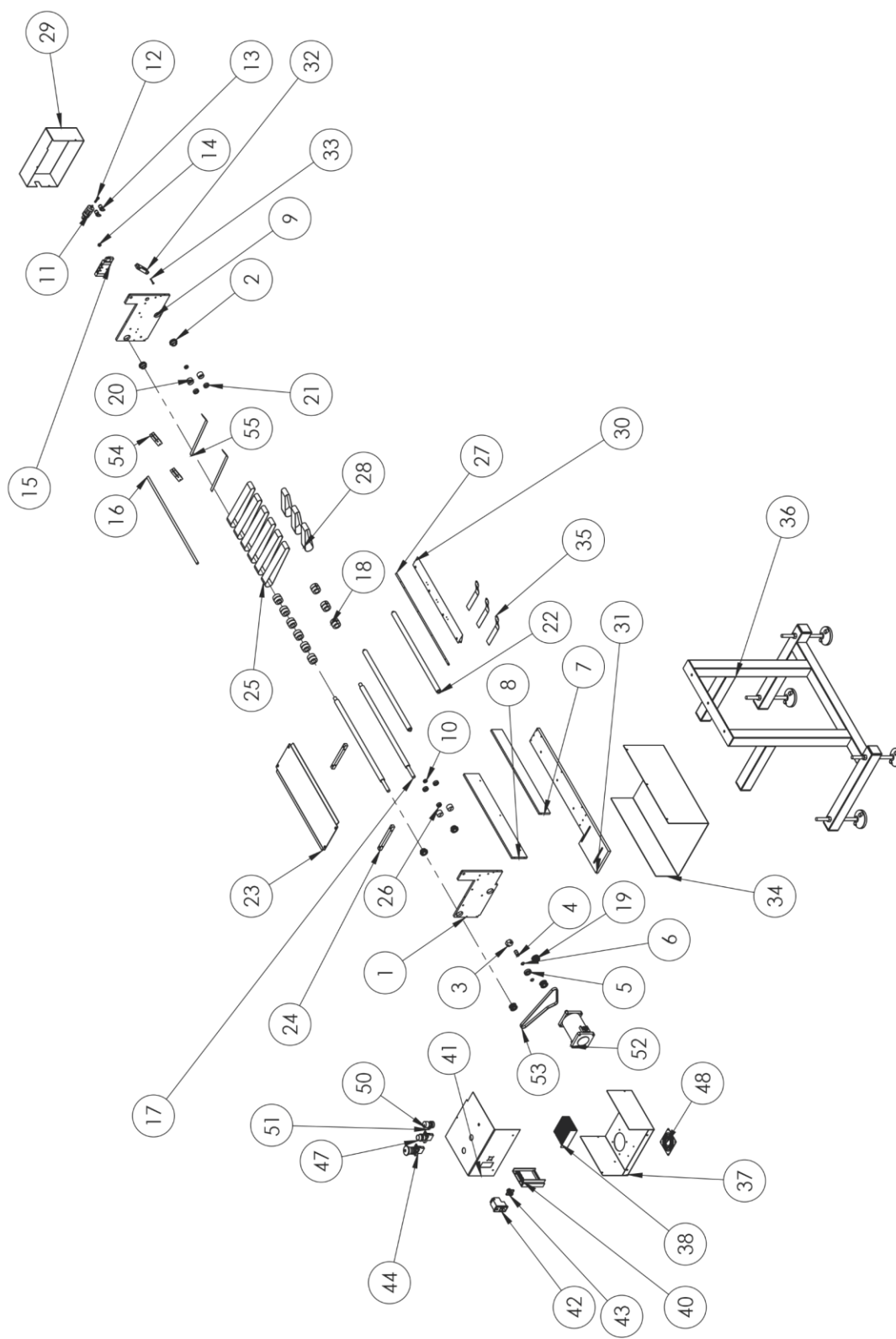
Standard power inlet with 110vac.

## EXTERNAL INTERFACE

Pins 1 and 4 when shorted together will activate the Divert. It needs to be a Dry contact closure.

***Do not supply an external voltage to these pins.***





| ITEM NO. | PART NUMBER | DESCRIPTION            | QTY. |
|----------|-------------|------------------------|------|
| 1        | 300758      | Frame RH               | 1    |
| 2        | 301269      | Collar Locking Bearing | 4    |
| 3        | 301216      | Hex Belt Tensioner     | 1    |
| 4        | 301217      | Tensioner Shaft        | 1    |
| 5        | 100141      | R8 Bearing             | 1    |
| 6        | 390047      | Snap Ring              | 2    |
| 7        | 300761      | Front Frame Plate      | 1    |
| 8        | 300763      | Rear Frame Plate       | 1    |
| 9        | 300759      | Diverter Frame LH      | 1    |
| 10       | 300769      | Bearing R4             | 2    |
| 11       | 300774      | Air Cylinder           | 1    |
| 12       | 300773      | Rod end                | 1    |
| 13       | 104026      | Control valve          | 2    |
| 14       | 301268      | Collar                 | 1    |
| 15       | 196941      | Solenoid               | 1    |
| 16       | 300764      | Product springs shaft  | 1    |
| 17       | 300765      | Upper Drive Shaft      | 2    |
| 18       | 301283      | Crowned Drive Roller   | 9    |
| 19       | 300844      | 15T Timing Pulley      | 3    |
| 20       | 301460      | Bearing Cup R6         | 4    |
| 21       | 100135      | Bearing R6             | 4    |
| 22       | 300766      | Idler Shaft            | 2    |
| 23       | 300767      | DECK TOP               | 1    |
| 24       | 300768      | Deck Top Brace         | 2    |
| 25       | 300771      | Belt Non Diverted      | 6    |
| 26       | 301461      | Bearing Cup R4         | 1    |
| 27       | 300770      | Diverter shaft         | 1    |
| 28       | 300772      | Discharge Belt         | 3    |

| ITEM NO. | PART NUMBER | DESCRIPTION                | QTY. |
|----------|-------------|----------------------------|------|
| 29       | 300777      | Cover                      | 1    |
| 30       | 300779      | Diverter Paddle            | 1    |
| 31       | 300799      | Main Lower Cross Bar       | 1    |
| 32       | 300775      | Tie Rod Clevis             | 1    |
| 33       | 300776      | Clevis Pin                 | 1    |
| 34       | 300796      | Catch Bin                  | 1    |
| 35       | 300938      | Divert spring              | 3    |
| 36       | 500040      | Stand                      | 1    |
| 37       | 301464      | Electrical Pan             | 1    |
| 38       | 301066      | Power Supply               | 1    |
| 40       | 301288      | Motor Driver               | 1    |
| 41       | 301275      | Cover                      | 1    |
| 42       | 100243      | CorCom                     | 1    |
| 43       | 112039      | Connector 4 Pin            | 1    |
| 44       | 400195      | E-Stop assy w/contact      | 1    |
| 47       | 100143      | Push Button assy w/contact | 1    |
| 50       | 100407      | Speed Pot Knob             | 1    |
| 51       | 100418      | Speed Pot                  | 1    |
| 52       | 300842      | Motor                      | 1    |
| 53       | 350149      | Drive timing belt          | 1    |
| 54       | 301085      | Side Frame Mounting Block  | 2    |
| 55       | 300968      | Strap                      | 2    |

## **WARRANTY:**

### ***SUPERIOR – PHS LIMITED WARRANTY***

Superior Paper Handling Solutions, Inc. (Superior – PHS) warrants this product to be free from defects in materials and workmanship, when used under recommended operating conditions, for a period of one year from the date of original shipment.

If you discover a defect during the warranty period, please notify the distributor from whom you purchased this product, who will arrange for the replacement parts to be sent to you. Defective parts must be returned to Superior – PHS for credit on replacement parts. Shipping and labor costs are not included in this warranty. If the defect is not field-repairable, and if you return it to Superior – PHS during the warranty period, Superior – PHS will, at its sole option, repair or replace this product, at no charge to you other than shipping charges to and from the facility in Minneapolis, Minnesota.

If you return this product to Superior – PHS for warranty repair or replacement, please attach to the returned product your name and your company's name, address, telephone number and fax number; a description of the problem; and a copy of the bill of sale or invoice that shows the appropriate serial number for the product. All returns must be accompanied by an authorized Superior – PHS Returned Goods Authorization (RGA) number. An authorized RGA number can be obtained from the Superior – PHS distributor from whom you purchased this product.

This warranty applies only to products manufactured by Superior - PHS. This warranty does not apply if the product has been damaged by accident, abuse, misuse, neglect, improper maintenance, misapplication, or as a result of being attached to equipment not supplied by Superior - PHS; if the product has been modified without the written permission of Superior - PHS; or if the product's serial number has been removed or defaced. This warranty further does not apply to the failure of any rubber-based or consumable components including, but not limited to, rollers, bearings, belts, fuses, or bulbs.

**ALL IMPLIED WARRANTIES INCLUDING WITHOUT LIMITATION THE IMPLIED WARRANTY OF FITNESS FOR A PARTICULAR PURPOSE AND THE IMPLIED WARRANTY OF MERCHANTABILITY ARE HEREBY DISCLAIMED.**

Superior - PHS is not responsible for special, incidental, or consequential damages resulting from any breach of warranty or under any other legal theory, including lost profits, downtime, goodwill, or damage to or replacement of equipment or property.

This warranty and the remedies set forth above are exclusive and are in lieu of all others, oral or written, express or implied. There are no warranties that extend beyond the description on the face hereof. No Superior - PHS employee, distributor, or agent is authorized to make any modification, extension, or addition to this warranty.

**OPERATORS NOTE PAGE**

---

---

---

---

---

---

---

---

---

---

---

---