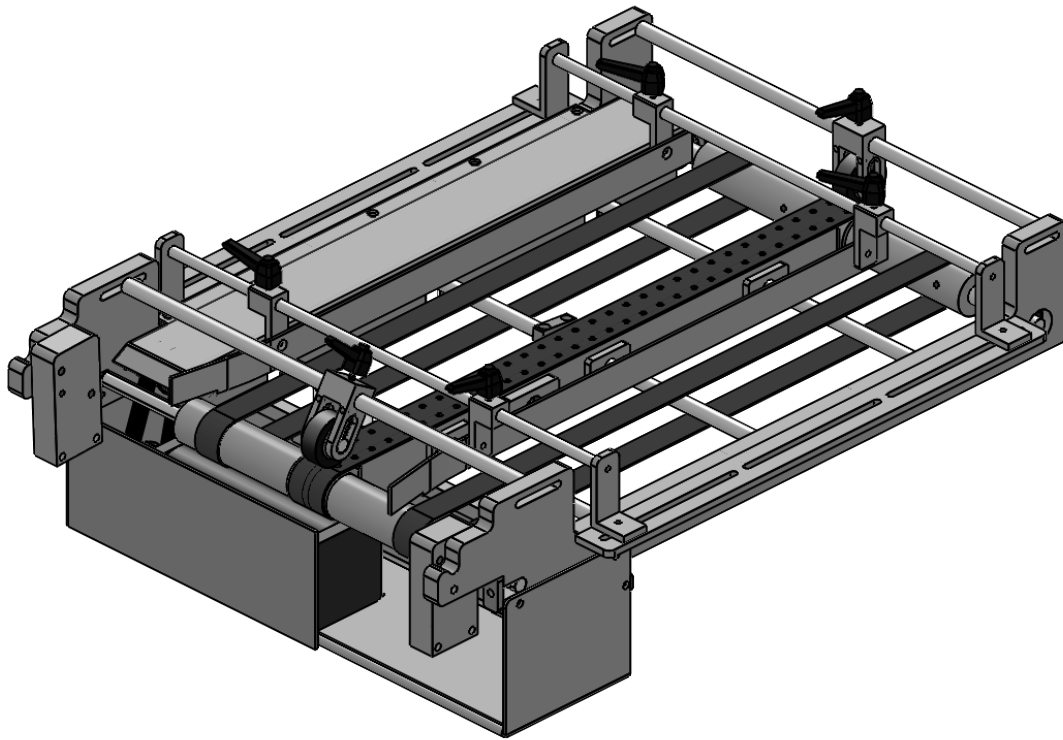


D5FHBC "	A :: D5FH,	J YbXcf	E HM	REV	C DH	DESCRIPTION
%\$\$(%	F, &FG	71 H#FG	,	XX		R8 BEARING
%\$\$( ' +'	- (%&( %	9@9G5	&	XX		THREADED ADJUSTABLE HANDLE .500
%\$\$( ' (	B #5	A 57 <B 98	&	B		NIP ROLLER YOLK MOUNT
%\$\$( ' )	B #5	A 57 <B 98	&	B		NIP ROLLER DELRIN ROLLER
%\$\$( ' *'	B #5	A 57 <B 98	&	B		NIP ROLLER AXLE SHAFT
%\$\$(%)%	* &, \$) ? ( *	A WA 5G#F 7 5FF	(	XX	M	PEDESTAL FOOT
' %&* -	G) DD; &	71 H#FG	'	XX		.500 ID 1.125 OD SPLIT COLLAR LOCKING BEARING
' %&, )	-) *) ?) *	A WA 5G#F 7 5FF	,	XX	M	2 X 2 END CAP
' %&+*	B #5	A 57 <B 98	)	B		EXTENDED VACUUM SUPPORT ROD
' %&+*(	B #5	A 57 <B 98	&	A		IDLER END ADJUSTMENT CAP
' %&+*)	B #5	A 57 <B 98	%	C		REAR IDLER SHAFT
' %&+**	B #5	A 57 <B 98	%	D		EXTENDED DRIVE SHAFT
' %&+*+	B #5	G< 99HA 9#B @	%	E		MOTOR PAN
' %&+*,	B #5	A 57 <B 98	%	B		EXTENDED GUIDE BLOCK SLIDE RAIL
' %&+* -	%&' (? *	695F#;	%	XX		1/2" NEEDLE BEARING
' %&+ +'	B #5	A 57 <B 98	%	C		DRIVE SHAFT
' %&+ + +	B #5	A 57 <B 98	%	A		VACUUM BLOCK CAP
' %&+ +,	B #5	A 57 <B 98	&	B		FVT DRIVE ROLLER
' %&+ + -	B #5	A 57 <B 98	&	B		FVT IDLER ROLLER
' %&+ , \$	B #5	A 57 <B 98	&	D		BELT GUIDE ADJUSTMENT BLOCK
' %&+ , %	B #5	A 57 <B 98	%	B		1.5" OD X 1.5" W CROWNED IDLER PULLEY
' %&+ , &	B #5	A 57 <B 98	%	B		1.5" OD X 1.5" W CROWNED DRIVE PULLEY
' %&+ , (	B #5	A 57 <B 98	*	C		VACUUM SHAFT MOUNT O RING PLATE
' %&+ , )	B #5	A 57 <B 98	%	A		THREADED MANIFOLD FITTING PLATE
' %&+ , *	B #5	A 57 <B 98	&	C		VACUUM MANIFOLD END CAP
' %&+ , +	B #5	A 57 <B 98	%	E		RIGHT VAC ARM 24"
' %&+ , ,	B #5	A 57 <B 98	%	D		LEFT VAC ARM 24"
' %&+ , -	B #5	A 57 <B 98	&	A		UNIVERSAL MOUNT WING 24"
' %&+ - \$	B #5	G< 99HA 9#B @	%	B		TOP BELT GUARD 24"
' %&+ - %	B #5	A 57 <B 98	%	C		1.5" x 1.5" VACUUM MANIFOLD
' %&+ - &	B #5	69#H	%	C		FVT VACUUM BELT 24"
' %&+ - '	B #5	69#H	&	C		FVT TABLE BELT 24"
' %&+ - +	B #5	A 57 <B 98	&	B		FVT PIVOT MOUNT BLOCK
' %&+ )'	B #5	A 57 <B 98	(	A		SIDE GUIDE MOUNT
' %&+ ) (	B #5	A 57 <B 98	&	B		SIDE GUIDE ROD
' %&+ ) +	B #5	G< 99HA 9#B @	%	B		SIDE GUIDE LT - FULL
' %&+ ) ,	B #5	G< 99HA 9#B @	%	B		SIDE GUIDE RT - FULL
' %&+ ) -	B #5	A 57 <B 98	(	A		SIDE GUIDE ADJUSTMENT BLOCK
' %&+ * \$	B #5	G< 99HA 9#B @	%	A		MOTOR GUARD
' %&+ + +	B #5	A 57 <B 98	%	A	M	IG ENCODER LOWER BRACKET
' %&+ + ,	B #5	A 57 <B 98	%	A	M	IG ENCODER UPPER BRACKET
' %&+ , -	B #5	A 57 <B 98	&	A	M	HORIZONTAL STAND SUPPORT
' %&+ - \$	B #5	A 57 <B 98	&	A	M	VERTICAL STAND SUPPORT
' %&+ - %	B #5	A 57 <B 98	&	A	M	MOUNT PLATE
' %&+ - &	B #5	A 57 <B 98	%	A	M	RIGHT VAC ARM 24" STAND
' %&+ - '	B #5	A 57 <B 98	%	A	M	LEFT VAC ARM 24" STAND
' %&+ - (	B #5	A 57 <B 98	&	A	M	IDLER END ADJUSTMENT CAP STAND
' %&+ - )	B #5	A 57 <B 98	&	A	M	FEEDER MOUNT
' %&+ - *	B #5	A 57 <B 98	%	A	M	BASE STAND SUPPORT
' %&+ - +	B #5	A 57 <B 98	%	A	M	BRACE SUPPORT
' %&+ - ,	B #5	A 57 <B 98	%	A	M	MID BRACE SUPPORT LT
' %&+ - -	B #5	A 57 <B 98	%	A	M	MID BRACE SUPPORT RT
' %&+ % \$	B #5	A 57 <B 98	&	A	M	ANGLE SUPPORT
' ) \$ \$ %	@99GC B ' A %&\$\$\$( &% * < D 87	9@97 H F 7 5 @	%	XX		DC MOTOR
' ) \$ \$ % -	- (+&- 5 &) \$	< 5F8K 5F9	(	XX		1/2" STANDOFF
' ) \$ \$ % &	' \$!) A %! * : 5'	6/ ' 6 A ::	%	XMB		30 TOOTH HTD TIMING PULLEY
' ) \$ \$ % '	- %&( ) 5 ( + -	< 5F8K 5F9	(	XX		NIP ROLLER DOWEL PIN
' ) \$ \$ % (	- * ) + ? ( '	< 5F8K 5F9	(	XX		NIP ROLLER SPRING
' ) \$ \$ % '	&\$!) A %! * : 5 *	6/ ' 6 A ::	'	XM		20 TOOTH HTD TIMING PULLEY
' ) \$ % ,	' %&! ) A ! %	69#H	%	XX		310-5M-15
' ) \$ % -	%&( ) ! A ! %	69#H	%	XX		1175-5M-15

) \$\$\$, &  
: J H&("



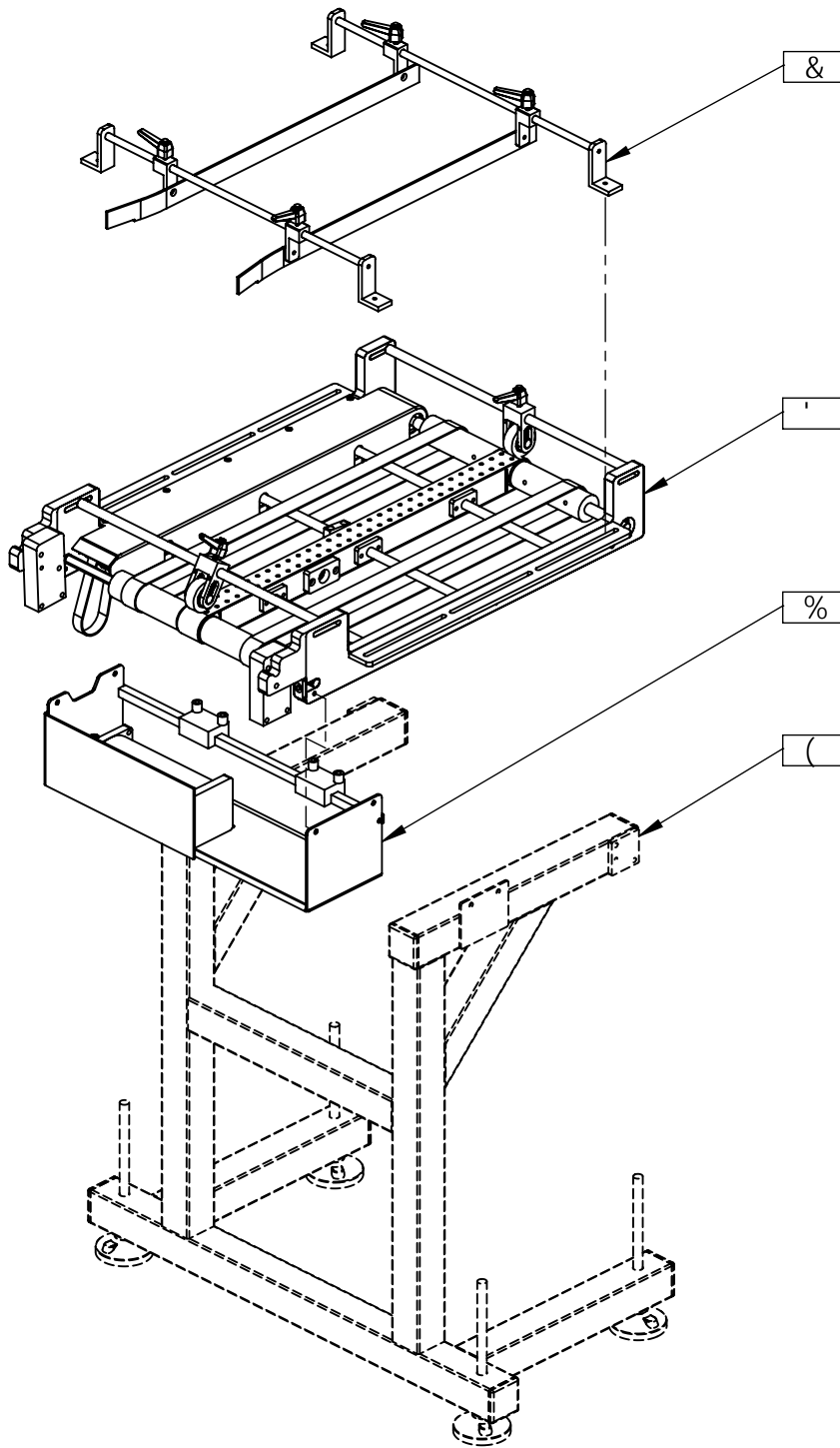
6

*Superior*

PAPER HANDLING SOLUTIONS

DFC DF-915 FM5B8 7CB: 89BH5@

H: 9-B: CFA 5HC B 7 CBIH B98 -B H-6  
8F5K -B: -GH: 9GC @DFC D9F HMC:  
Q D9F C F D5D9F <5B8 @B: GC @ HC BG" 5BM  
F9DFC B1 7 HC B -B D5FHCF 5G5 K <C @  
K #k: C I HH: 9K F #H8 D9FA GGC B C:  
Q D9F C F D5D9F <5B8 @B: GC @ HC BG-G  
DFC < 6#H8"



#PA BC "	DUftBc	DESCRIPTION	E HM
%	(\$\$ *\$	MOTOR ASSEMBLY	%
&	(\$\$ *(	SIDE GUIDE KIT	%
'	(\$\$ *)	CARRIAGE ASSEMBLY (24")	%
(	(\$\$ (%	STAND ASSEMBLY (OPTION)	%

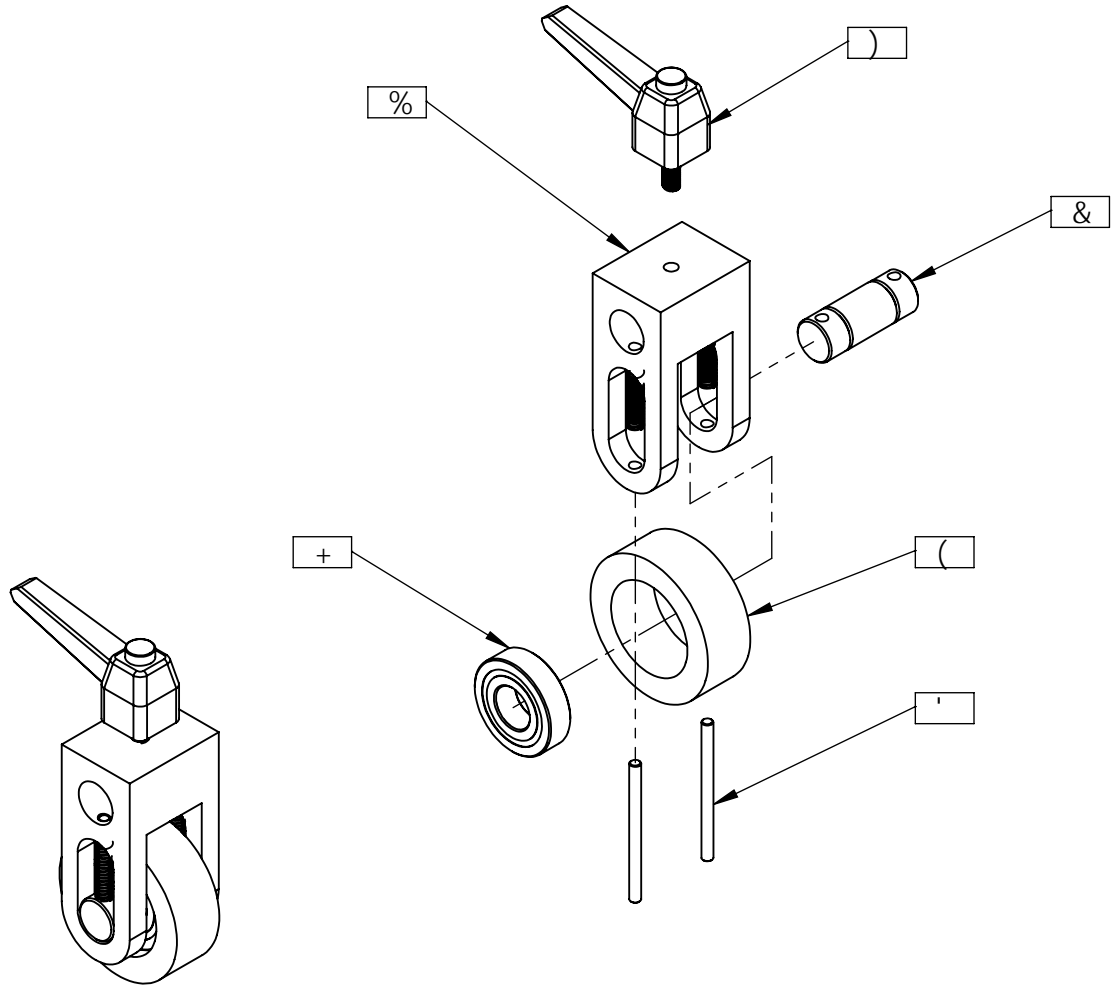
DFC DF-95FM5B8 7CB: 89B H5@

H:9 B: CFA 5HC B 7 C B H 5 B 98 B H: 68F5K B: GH:9CC @DFC D9FHMC: G D9F C F D5D9F  
 <5B8@B: GC @ HC BG 5BMF9DFC B1 7 HC B B D5FHC F 5G5 K <C @9K H:C1 H H:9K F H9B  
 D9FA 4GC B C: G D9F C F D5D9F <5B8@B: GC @ HC BG GDFC <6498"

*Superior*  
 PAPER HANDLING SOLUTIONS

5ggYa V`mBi a VYf.  
 ) \$\$\$, &

# B-D'FC @9F '5GG9A 6@M



#9A BC "	DUffBc	DESCRIPTION	E HM
%	%%\$( ' (	YOLK MOUNT	%
&	%%\$( ' *	AXLE SHAFT	%
'	' ) \$\$&'	DOWEL PIN	&
(	%%\$( ' )	DELRIN ROLLER	%
)	%%\$( ' +'	HANDLE	%
*	' ) \$\$&(	SPRING	&
+	%%\$%( %	BEARING	%

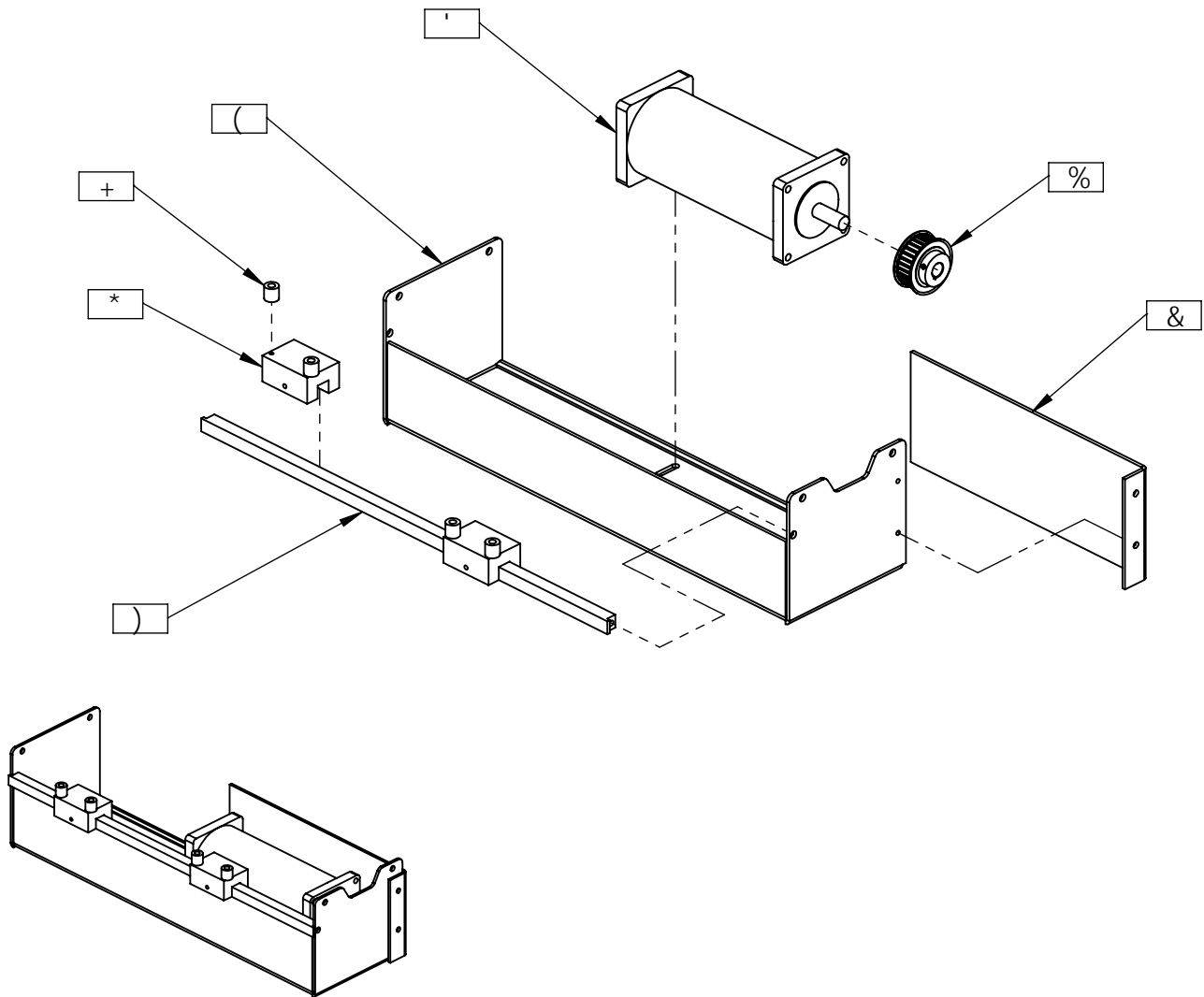
DFC DF-95FM5B8 7CB: 898H5@

H:9 B: CFA 5HC B'7 C B15-B98 'B H: G8F5K 'B: 'GH:9GC @DFC D9FHMC: 'G D9F 'CF D5D9F' <5B8@B: 'GC @ HC BG' 5BMF9DFC B1 7 HC B' B D5FHCF 5G5 K <C @9K H:C1 HH:9K F H9B' D9FA 4GC B' C: 'G D9F 'CF D5D9F <5B8@B: 'GC @ HC BG GDFC <6+98'

**Superior**  
PAPER HANDLING SOLUTIONS

5ggYa V`mBi a VYf.  
(\$\$\$, &

# A C H C F ' 5 G G 9 A 6 @ M



#P A B C "	D U f t B c	DESCRIPTION	E H M
%	' ) \$ \$ & %	TIMING PULLEY	%
&	' \$ % * \$	MOTOR GUARD	%
'	' ) \$ \$ %	MOTOR	%
(	' \$ % + * +	MOTOR PAN	%
)	' \$ % + ,	BLOCK SLIDE RAIL	%
*	' \$ % + , \$	BELT GUIDE ADJUSTMENT BLOCK	&
+	' ) \$ \$ %	STANDOFF	(

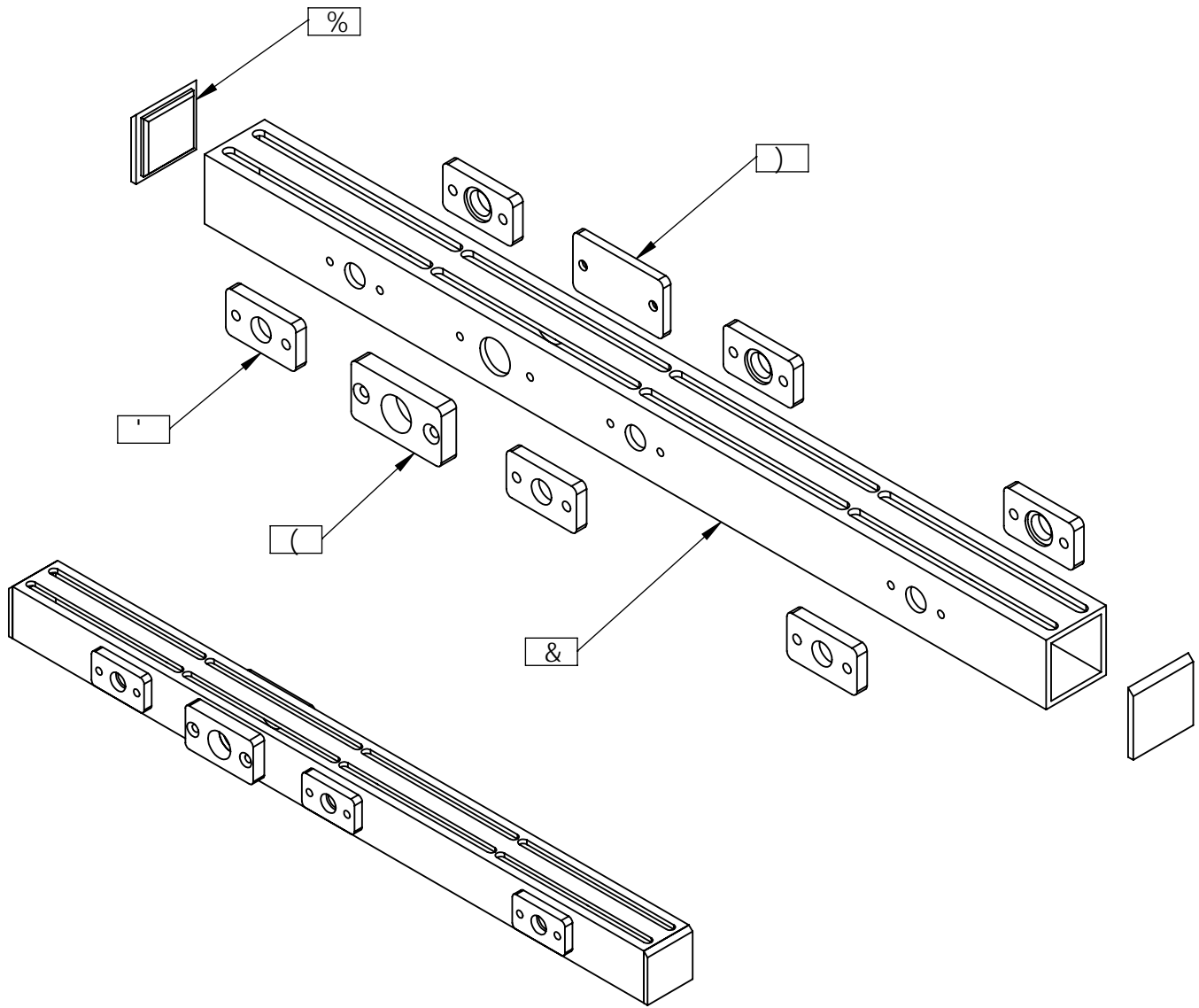
DFC DF 5 B F M 5 B 8 7 C B : 8 9 B H 5 @

H: 9 B: C F A 5 H C B 7 C B H 5 B 9 8 B H: G 8 F 5 K B: ' G H: 9 G C @ D F C D 9 F H M C: ' G D 9 F C F D 5 D 9 F '  
< 5 B 8 @ B: ' G C @ H C B G ' 5 B M F 9 D F C B I 7 H C B ' B D 5 F H C F 5 G 5 K < C @ 9 K H: C I H H 9 K F H 9 B '  
D 9 F A G G C B ' C: ' G D 9 F C F D 5 D 9 F < 5 B 8 @ B: ' G C @ H C B G G D F C < 6 + 9 8 "

*Superior*  
PAPER HANDLING SOLUTIONS

5 g g Y a V ` m B i a V Y f .  
( \$ \$ ' \* \$

# J 5711 A 'A 5B ÷ C @ 8 '5GG9A 6@Mf&( 'L



±DA BC "	DUfBc	DESCRIPTION	E HM
%	' \$%+, *	MANIFOLD END CAP	&
&	' \$%+- %	VACUUM MANIFOLD	%
'	' \$%+, (	VACUUM SHAFT MOUNT	*
(	' \$%+, )	MANIFOLD PLATE	%
)	' \$%+ ++	VACUUM CAP	%

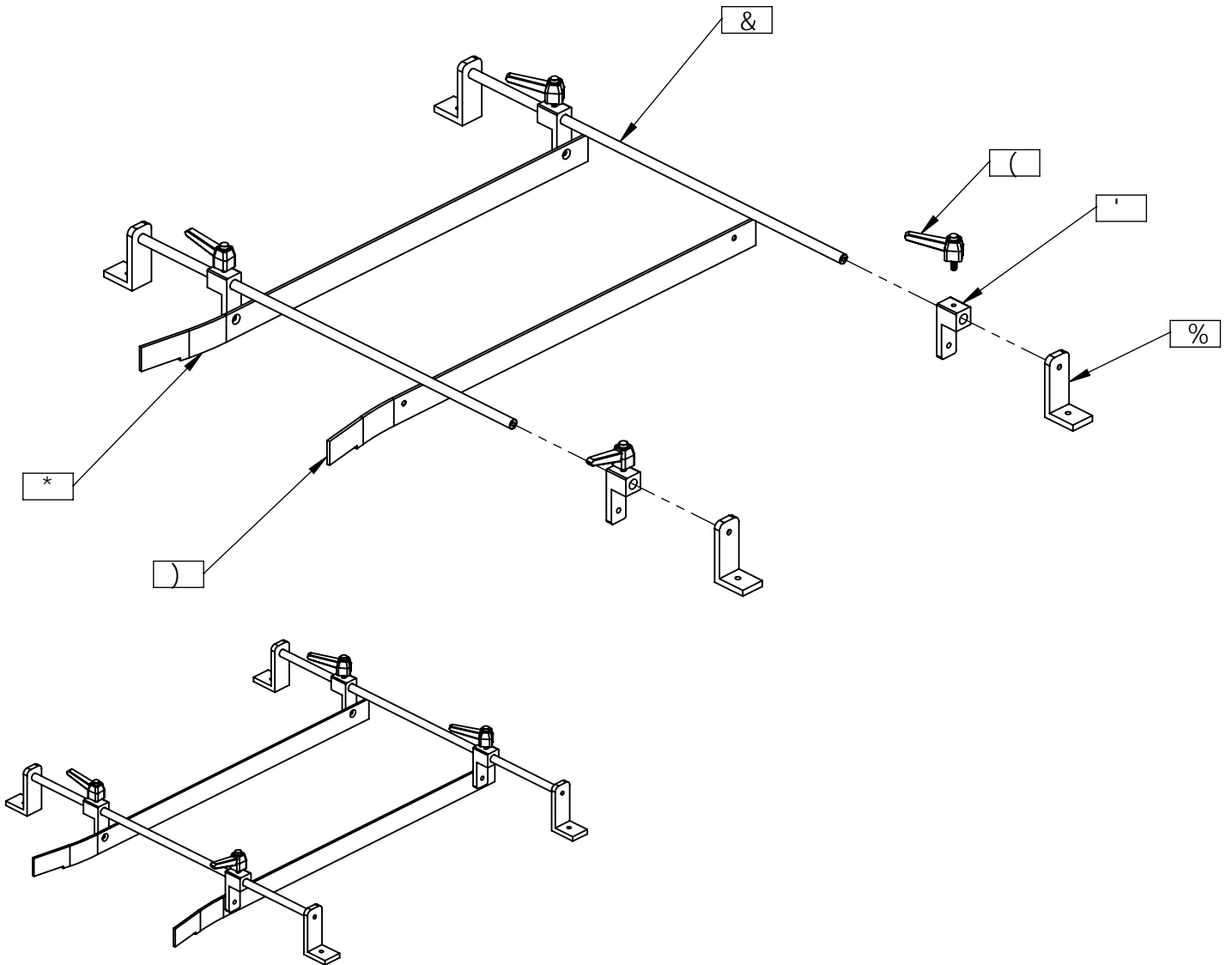
DFC DF-95FM5B8 7CB: 89BH5@

H:9 B: CFA 5HC B 7 C B H 5 B 98 'B H: G8F5K 'B: 'GH:9GC @DFC D9FHMC: 'G D9F C F D5D9F'  
<5B8@B: 'GC @ HC BG' 5BMF9DFC B1 7 HC B 'B D5FHCF 5G5 K <C @9K H:C1 H H:9K F H9B'  
D9FA 4GC B'C: 'G D9F C F D5D9F <5B8@B: 'GC @ HC BG GDFC <6+98"

*Superior*  
PAPER HANDLING SOLUTIONS

5ggYa V`mBi a VYf.  
(\$\$' \*'

# G-89; 1 -89? HfR( "L



#PA BC "	DUffBc	DESCRIPTION	QTY.
%	' \$% )'	SIDE GUIDE MOUNT	4
&	' \$% ) (	SIDE GUIDE BAR	2
'	' \$% ) -	ADJUSTMENT BLOCK	4
(	%\$\$' +'	HANDLE	4
)	' \$% ) ,	SIDE GUIDE RT	1
*	' \$% ) +	SIDE GUIDE LT	1

DFC DF-95FM5B8 7CB: 89BH5@

H:9B: CFA 5HC B 7 C B H 5 B 98 B H: G8F5K B: GH:9CC @DFC D9FHMC: G D9F C F D5D9F  
 <5B8@B: GC @ HC BG 5BMF9DFC B1 7 HC B B D5FHCF 5G5 K <C @9K H:C1 H H:9K F H9B  
 D9FA 4GC B C: G D9F C F D5D9F <5B8@B: GC @ HC BG GDFC <6H98"

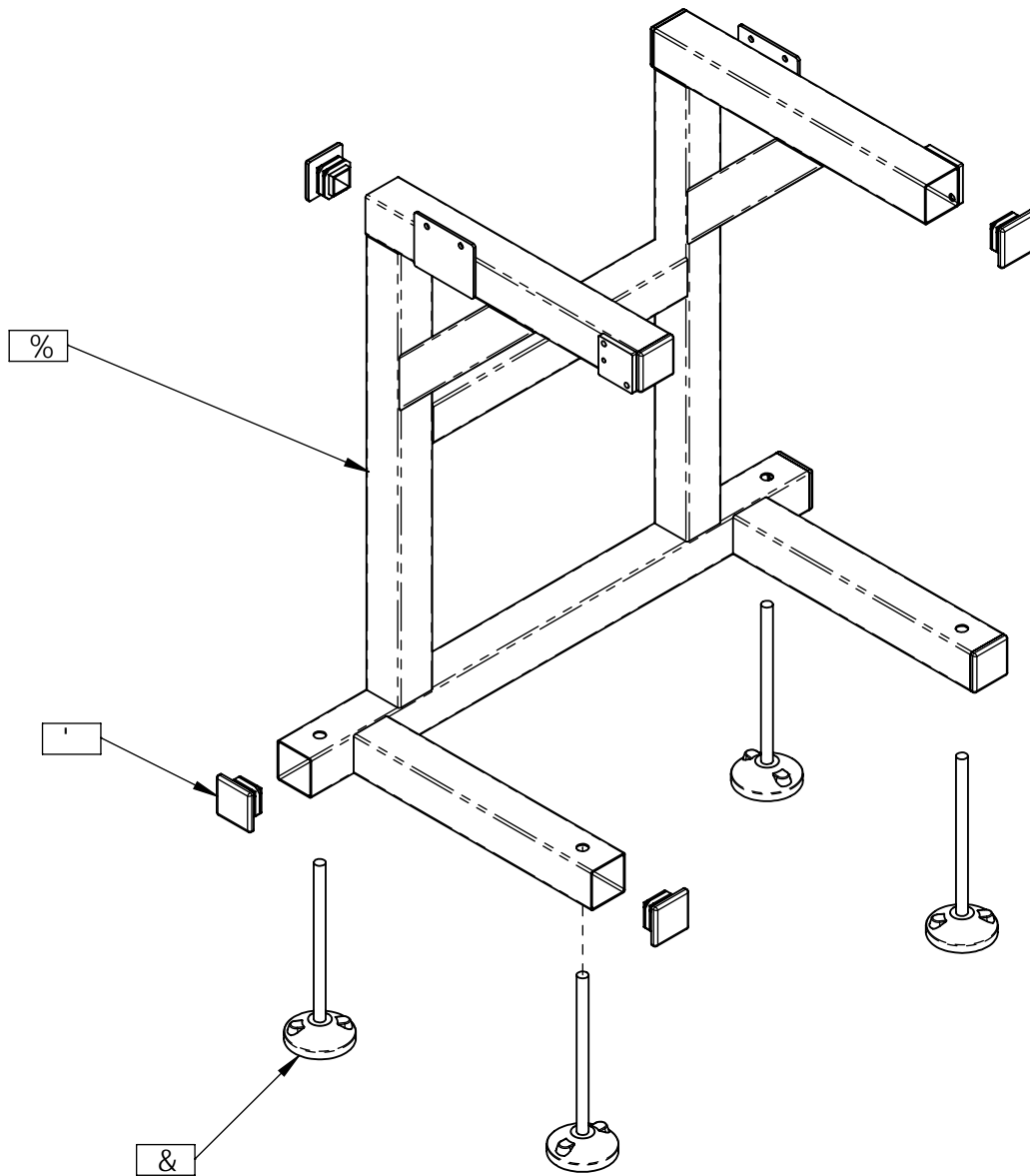
**Superior**  
 PAPER HANDLING SOLUTIONS

5ggYa V`mBi a VYf.  
 (\$\$' \*(





# GH5B8'5GG9A 6@Mf&( 'L fC DHC BŁ



#DA BC "	DUftBc	DESCRIPTION	E HM
%	( \$( (%	STAND WELDMENT (OPTION)	%
&	%%\$%) %	PEDESTAL FOOT (OPTION)	(
'	' \$%&, )	END CAP (OPTION)	,

DFC DF-95FM5B8 7CB: 89BH5@

H:9 B: CFA 5HC B'7 C BH5 B98 'B H: G8F5K B: 'GH:9CC @DFC D9FHMC: 'G D9F C F D5D9F'  
<5B8@B: 'GC @ HC BG' 5BMF9DFC B1 7 HC B' B D5FHC F 5G5 K <C @9K H:C1 H:9K F H9B'  
D9FA 4GC B'C: 'G D9F C F D5D9F <5B8@B: 'GC @ HC BG GDFC <6+98"

*Superior*  
PAPER HANDLING SOLUTIONS

5ggYa V`mBi a VYf.  
(\$\$(%