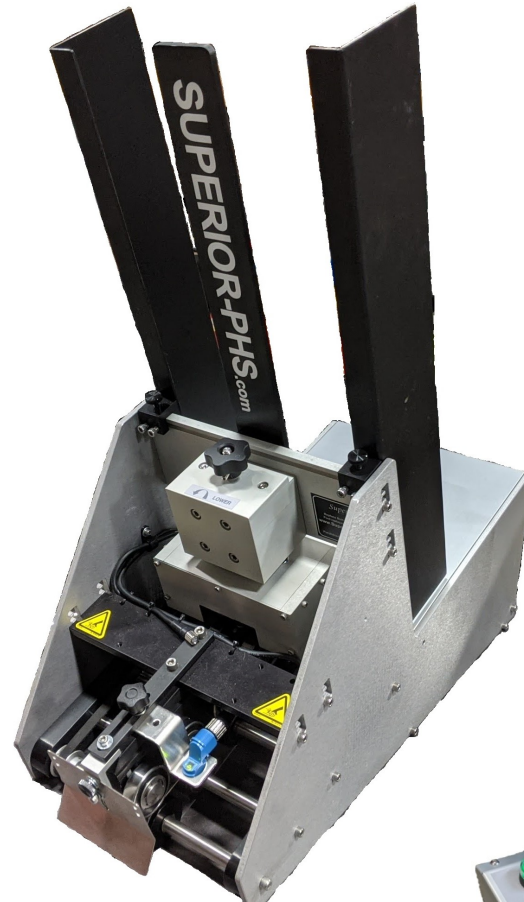


The Xtreme XME-900BC delivers the most versatile and highest quality feeding solution to generate superior ROI, all while reducing touches and maximizing productivity!

## Feeding Solutions For:

With a sleek design and compact footprint, the new XME-900BC delivers greater performance in batch-counting, one-shot and continuous product feeding applications for inline use with shrink-wrapping and polybagging. The very compact footprint makes this solution easily integrated to maximize productivity and generate superior ROI. Simply mount the XME-900BC to a Superior-PHS rolling stand for use throughout the entire production and fulfillment area.



Touch-screen interface, manual controls, and system I/O Interface

## Integrate With:

- Wrappers
- Banders
- Collator & Kitting Lines
- Barcode Readers
- Inspection Systems
- Bundle Stackers
- Auto L-Bar Sealers
- Cartoners
- Strappers
- Print/Label Systems
- Camera Systems
- & more!

## SPECIFICATIONS

<b>Power/Air</b>	115vac, 5A, 60Hz
<b>Max Speed</b>	300 Feet Per Minute
<b>Max Product W x L x H</b>	9.00" W x 9.00" L—.750"
<b>Min product W x L x H</b>	2.00" W x 2.50" L—.005"
<b>Dimensions</b>	10" W x 21" L x 26" H