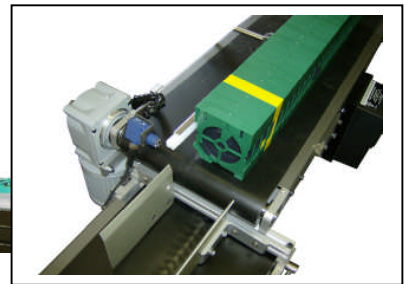


Superior

PAPER HANDLING SOLUTIONS



APPLICATION BULLETIN

Industry leading manufacturer of synthetic textiles upgrades their cassette labeling process

August 2007

This end user customer required an upgrade to an obsolete desk top method of applying labels and folded information pamphlets to reels of fishing line in square plastic cassettes. When their previous system went down in late spring of 2007, this customer set out to replace it with a new more reliable, high speed system. During their down time, the end user was required to manually place labels on the cassettes using an average of 5 people to achieve approximately 20,000 labeled cassettes per day. The new system reduced the manual labor from 5 laborers to 1 machine operator. Based on the price of the overall system and labor reduction, the return on investment was calculated at 52 days.

Operation: The cassettes are manually loaded “on edge” onto the Superior 12’ Collection Conveyor. A photo-sensor controls the starting and stopping of the conveyor to allow each cassette to “drop” into position on the Superior 6’ Collection Conveyor. As the cassettes are transported at a rate up to 40 ppm, the label applicator applies a label to one side of the cassette. As the cassette exits the 6’ Collection Conveyor, it “drops” and “flips over” onto another belted conveyor. The cassette then receives a pamphlet manually inserted into the molded tab on it.

Total Solution: As provided by the Superior-PHS Reseller Partner, consisted of (1) Custom Champion 12’ Collection Conveyor, (1) 6’ Champion Collection Conveyor, (1) Print and Apply system with Tamp Pad, and custom mounting.

Superior

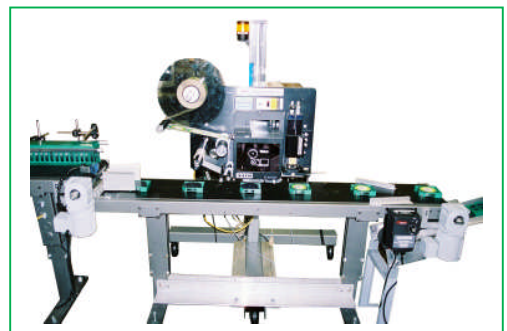
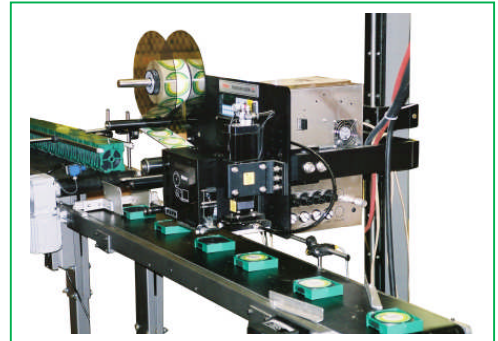
PAPER HANDLING SOLUTIONS

SPECIFICATIONS:

Material Types:	Plastic Cassettes Round preprinted labels
Material Sizes:	Cassettes – 4.125 x 4.5 x 1.125 and 3.625 x 4 x .875 Labels – 3.25” Round, preprinted
Speeds:	Up to 40 labels per minute

Features:

- Variable speed Champion Collection Conveyors
- Print & Apply Labeling System
- Alignment guide rails on conveyors
- Start-Stop Photo-Eye on Infeed Conveyor



Superior Paper Handling Solutions, Incorporated

9921 – 13th Avenue North – Minneapolis, MN 55441 USA
T. 763-546-9140 / www.superior-phs.com