



## ASSEMBLY INSTRUCTIONS – MOUNTING STANDS

This document will guide you through the steps involved to assemble the mounting stand and installation of the XM-Series Feeder.

### OVERVIEW / COMPONENTS

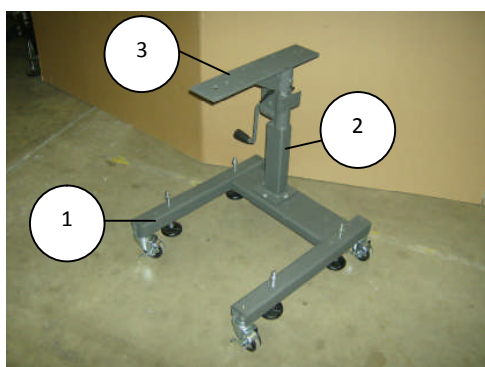


FIGURE 1

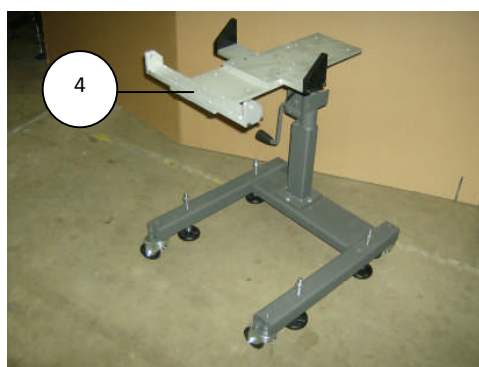


FIGURE 2

**ITEM 1: BASE** – The base of the stand comes in three different styles depending on the feeder model purchased (base shown is for the XM-1/XM-21 Feeders). The base comes complete with locking swivel casters and swivel base pedestal extensions.

**ITEM 2: UPRIGHT** – The upright comes in two different sizes; short and tall. The short upright is used on the “30” models and the tall upright is used on the “40” models. The upright houses the adjustment tube / handle.

**ITEM 3: HEAD** – The head attaches to the upright and provides the foundation for mounting the XM-Series Feeder or other machines including labeling heads and more.

**ITEM 4: PIVOT MOUNT ASSEMBLY** – The pivot mount assembly is included for feeder models XM-1 and XM-21 when a stand is also ordered. This assembly provides mounting capabilities for the XM-1 and XM-21 and allows for inline\* or 90-degree mounting. The rear mount can be adjusted inward and outward to change the dispensing angle of the feeder.

\* Subject to overall conveyor width

**Step 1** - Unpack components and assemble the upright to the base. The 4 bolts required for this step are threaded into the mounting holes on the base for shipping. Remove the bolts, position the upright (handle to the right), reinstall the bolts, and tighten.





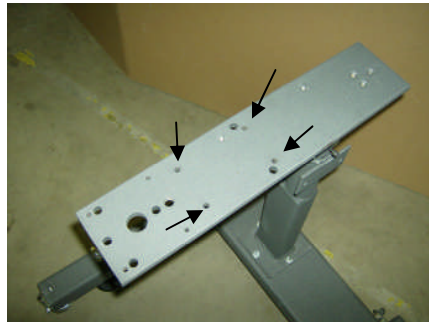
**Step 2** – Install head to upright. The bolt, lock washer, and nut required are fastened to the upright for shipping. Remove the bolt, lock washer and nut. Install the head (position as shown), reinstall the bolt, lock washer and nut, and tighten. There are 3 socket head cap screws already installed on the head. These are for additional securing of the head to the upright. Gently tighten these.



**NOTE:** For feeder models XM-1 and XM-21, the Pivot Mount Assembly will be mounted to the Head for shipping.

**Step 3** – Install feeder to stand

Feeder models with solid base plates; XM-2, XM-81, XM-83 mount directly to the stand head using 4 socket screws (enclosed in bag, attached to stand head). See picture below for correct holes on stand head. For feeder models XM-1 and XM-21, skip to next section.



**IMPORTANT** – this should be performed by at least two people.

Lift the feeder on to the stand head, aligning the mounting holes. Install the 4 screws and then tighten all 4. Note that the front of the base plate lines up with the front edge of the stand head.





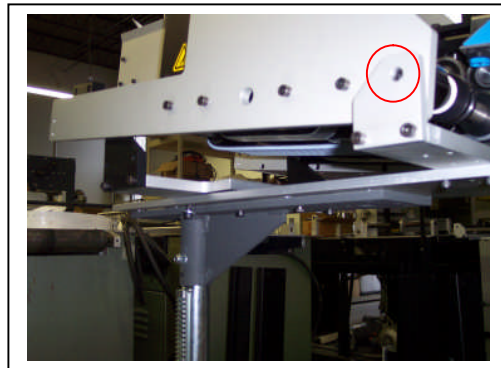
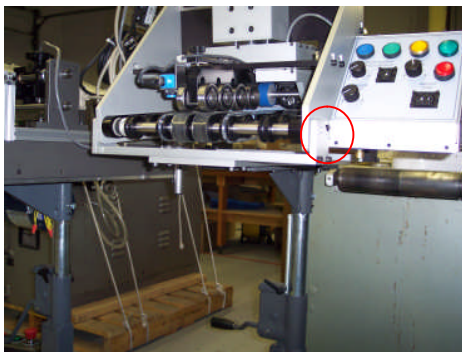
Feeder Models XM-1 and XM-21

**IMPORTANT – this should be performed by at least two people.**

Remove the front most socket screw from each side of the feeder. Do not discard, these will be reused.



Lift the feeder onto the Pivot Mount Assembly aligning the holes from which you just removed the socket screws with the front uprights and reinstall the two socket screws through the uprights and back into the feeder.



**Step 4** – Move the feeder & stand assembly into position, loosen locking levers (A), adjust height as required (B), retighten locking levers.

